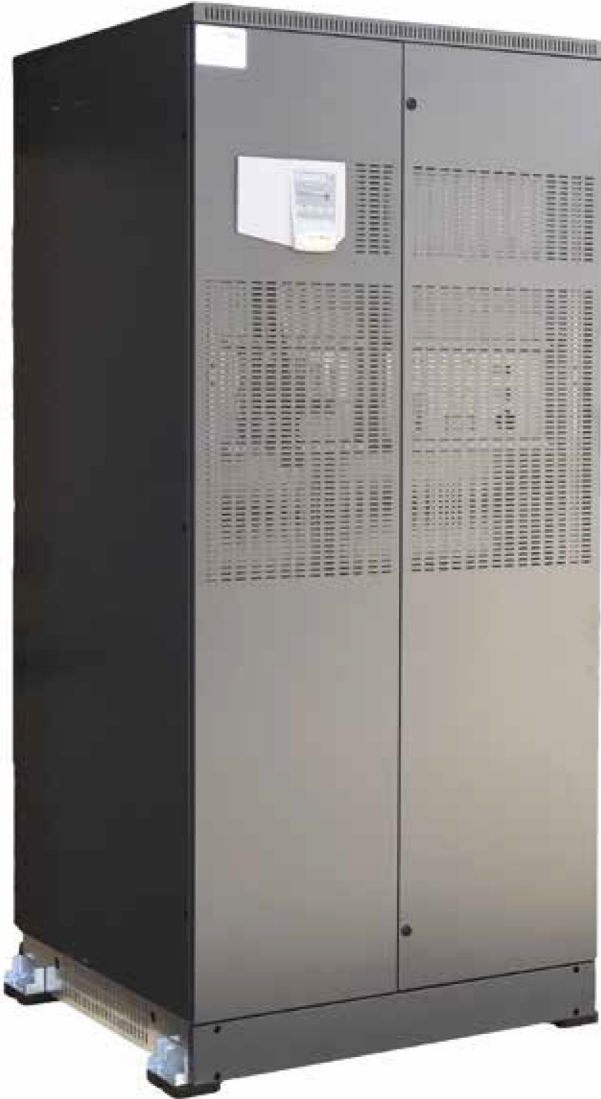
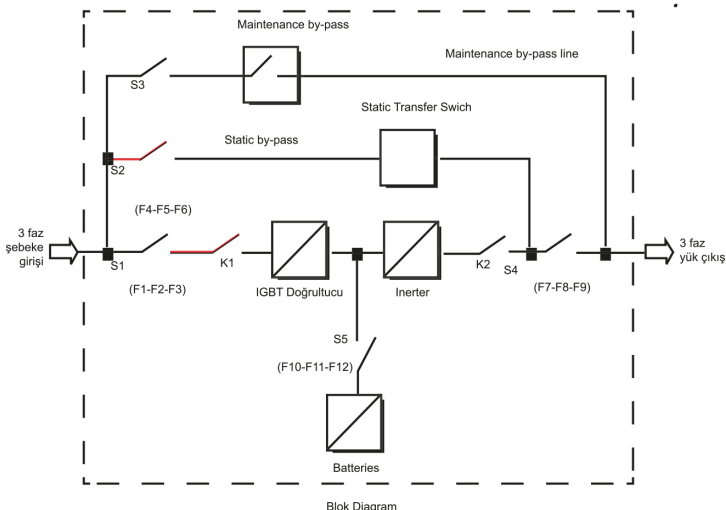


10-600 kVA



SLD 33 series, 3-phase input, 3-phase output, IGBT rectifier, DSP controlled interrupted power supplies are the high-technology products designed to maximize MTBF times that featuring high efficiency and safe operation and minimizing input harmonics distortions input equipped with IPM (Intelligent power modules) input power factor of which reaches to 0,99. Since development of products is carried out by software control by means of DS, updating of the developments is easy.

- High input power factor 0,99
- Low input current harmonics distortion (THDI) < 5%
- High efficiency up to 94%
- Feature of battery start up
- Static and service by-pass feature
- Overload and short-circuit protection system
- Emergency stop function
- 192 event sign-up (4500 alarms)
- Regenerative load feature
- Calendar and clock
- Advanced automatic battery test system
- Heat compensated battery charging system
- Modem setting for dial-up connection
- RS232 and dry contact interface for remote monitoring
- 3 DSP controlled modular construction
- Isolation transformer option at input and output by the application
- SNMP-compliant communication option
- MODBUS-compliant communication option
- Compliance with international standards (EC directive; EN 62040)
- 2 year full warranty and 10-year spare part warranty
- Production with CE, TSE, ISO9001 and ISO14001 quality assurance system
- Digital control construction
- Minimum space occupying
- Economic operation (ECONOMODE)
- Minimum electronic component
- Output current limitation
- Advanced diagnostics
- Selectable input/output voltage and frequency
- Secondary voltage source input
- Output DC leakage protection
- Separate DSP use for inverter
- 3 stage battery protection
- High-charging capacity
- Charging / discharging current indicator
- Advanced remote monitoring options



SLD 33 MODEL UPS (10-300 kVA) 3 Phase input/3 Phase output

SLD 33 SERIES 3 Phase Input - 3 Phase Output UPS

MODEL	SLD 33-10	SLD 33-15	SLD 33-20	SLD 33-30	SLD 33-40	SLD 33-60	SLD 33-80	SLD 33-100	SLD 33-120	SLD 33-160	SLD 33-200	SLD 33-250	SLD 33-300	
POWER (kVA)	10	15	20	30	40	60	80	100	120	160	200	250	300	
INPUT														
Voltage Tolerance	220/380 VAC (230/400 VAC) 3 Phase + N, +%20, -%25													
By-pass Voltage and Tolerance	220/380 VAC (230/400 VAC) 3 Phase + N, +/-%10													
Power Factor	>0.98-0.99													
Input THDI (Harmonic Distortion)	< %5													
Input Frequency and Tolerance	50 Hz / 60 Hz (adjustable) +/- %5													
OUTPUT														
Power (kW)	8	12	16	24	32	48	64	80	96	128	160	200	240	
Power Factor	0.8													
Voltage and Tolerance	380-400 VAC 3 P , 4 N, +Earth, +/-1% (240/415 opsiyonel)													
Frequency	50Hz/60 Hz (Adjustable)													
Frequency Tolerance	Synchronous Network +/- 1% / Self Employment: +/- 0,2% (Adjustable)													
Efficiency (%100 load)	up to %94													
Crest Factor	3:1													
Overload Protection	%100 - %125 load: 10 mins.													
	%125 - %150 load: 1 mins.													
	>%150 load: static by-pass.													
THD	< %3 linear load (non linear load: < %5)													
BATTERY														
Type	Full-closed Dry Type Maintenance Free													
Number of Batteries	2 x 30													
Charge Voltage	2 x 405 VDC													
End of Discharge Voltage	2 x 300 VDC													
Battery Operating Temperature	< 25 °C													
Battery Protection	Otomatik devre kesici													
Battery Test	Standart													
GENERAL														
Standard	EN62040-2													
User Interface	LCD Panel, Mimic led panel, 5 vektor buttons, Buzzer, Optional Graphical Color Touch Screen.													
Indicators	Phase -N Voltage, Phase-Phase Voltage, Current, Power, Crest Factor, Frequency, PF, Service Time													
Comunication	2xRS232 Serie Port, 4 standard and 8 optionel dry alarm contact													
Inputs	EPO (kill switch) input, Interactive panel battery input, Generator Input													
Generator Kit	Standard (Adjustable)													
Software	Standard Siel Administrative UPS Software (3 user + 1 server management)													
Alarm Record	Standard: 192 Event Date and Time , (512 Event optional)													
Protection	Overheating protection Siel module , Over Current, high temperture alarm													
Operating Temperature Range	0 °C - 40 °C													
Protection Class	IP20													
Humidity (Condensing)	%0 - %90													
Operating Height	90% max (non condensed) <1000m above sea level													
Noise Level (1m.)	< 57 dBA						< 62 dBA			< 68 dBA				
Weight (witout battery) (kg)	100	114	116	122	180	202	253	285	405	522	570	735	750	
Dimension (L*W*H) (mm)	400 x 780 x 1070				570x 900 x 1300		670x 730 x 1630		850x 780 x 1820	970x 850 x 1950		1340x1080x1950		
OPTIONS														
Input	110/208 VAC													
Output	110/208 VAC													
Transformer	Galvanic isolation tranformer (input and output)													
Software	Siel Soft Admin Multi UPS monitoring, Siel Soft Server 50-100-200 User , DLOG log loader													
Adapters	SNMP, MODBUS, RS485, Remote Monitoring Panel													
Parallel Operating	N+1 (up to 4 pcs.)													